



Sanitary Ball Valves (Encapsulated)

Clamp Ends



Weld Ends



Features & Benefits:

- Compact design for areas with tight space restrictions
- Full port design offers lower pressure drop and less turbulent flow
- Blow-out proof stem
- Lockable handle can prevent accidental actuation when used
- Balanced encapsulated construction minimizes cold-flow of seats
- Live-loaded stem packing
- Precision stainless steel balls reduce torque and friction losses while extending seat life
- Service kits available

- Other encapsulation materials available on request
- Actuation and feedback available on request

Product Specifications:

- ½ inch to 4 inch
- CF8M 316 Stainless Steel
- ID Polish is R^a32 minimum
- Pressure rating: ½" – 2" 1000 PSI WOG, 2 ½" – 4" 800

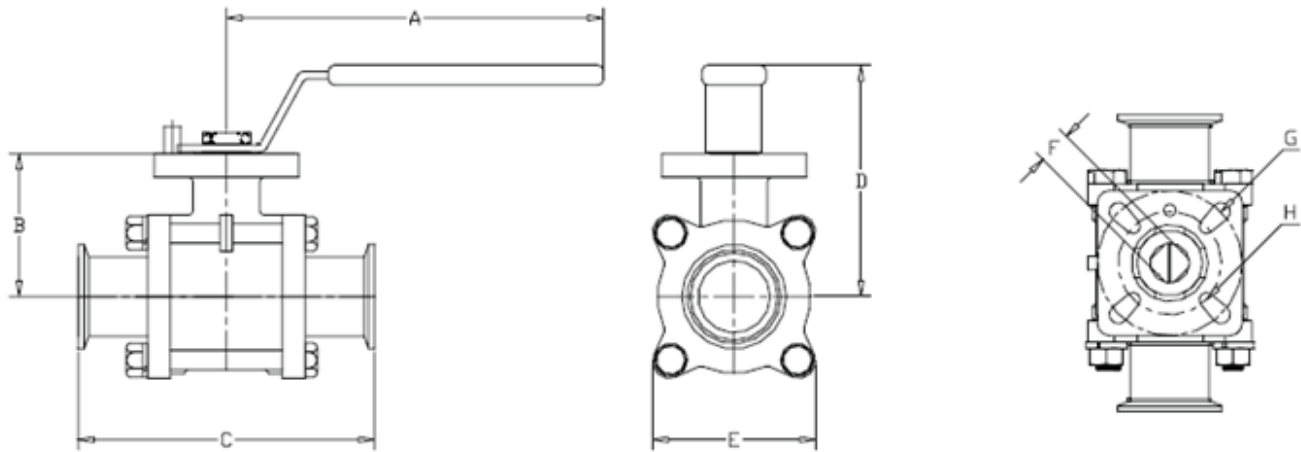
Approvals:

- ISO 5211 mounting pad
- 3.1B Material Certificate available on request
- TSE / BSE Certification available on request

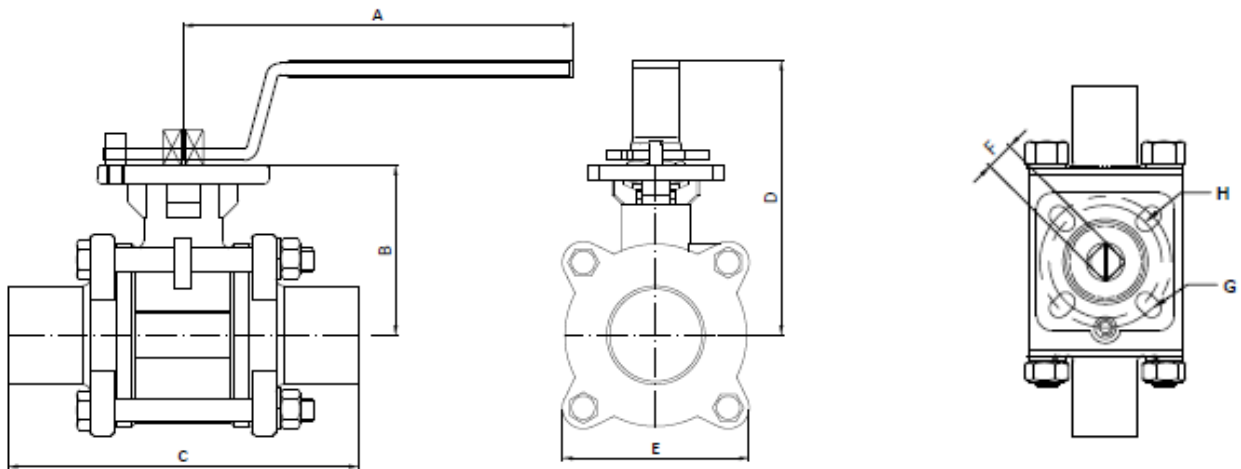
Size	Part #	Weight (kgs)	Assembly Torque (in. lbs.)	Non-Encapsulated Break Torque ** (in. lbs.)	Encapsulated Break Torque ** (in. lbs.)	ISO 5211
1/2"	BV2CV-050CC-A BV2CV-050BB-A	0.68	160	55	105	F03/F04
3/4"	BV2CV-075CC-A BV2CV-075BB-A	0.86	160	71	116	F03/F04
1"	BV2CV-100CC-A BV2CV-100BB-A	1.22	160	101	336	F04/F05
1 1/2"	BV2CV-150CC-A BV2CV-150BB-A	2.18	200	221	420	F05/F07
2"	BV2CV-200CC-A BV2CV-200BB-A	4.03	212	345	473	F05/F07
2 1/2"	BV2CV-250CC-A BV2CV-250BB-A	8.48	221	683	788	F07/F10
3"	BV2CV-300CC-A BV2CV-300BB-A	13.47	239	830	1155	F10/F12
4"	BV2CV-400CC-A BV2CV-400BB-A	19.77	266	1323	1680	F10/F12

** Torque is measured at the valve stem with virgin PTFE seats, 100 PSI differential pressure, ambient temperature and fluid with a specific gravity of 1.0.

Dimensions Clamp Ends



Dimensions Weld Ends



Valve Size	A	B	C	D	E	F	G	H
1/2"	124.46	38.10	109.22	76.20	48.26	9	F04	F03
3/4"	124.46	45.72	119.38	83.82	55.88	9	F04	F03
1"	142.24	53.34	124.46	91.44	60.96	11	F05	F04
1 1/2"	241.30	68.58	142.24	111.76	78.74	14	F07	F05
2"	241.30	78.74	162.56	121.92	93.98	14	F07	F05
2 1/2"	457.20	96.52	198.12	132.08	121.92	17	F10	F07
3"	457.20	106.68	228.60	144.78	137.16	17	F12	F10
4"	457.20	134.62	241.30	172.72	223.52	22	F12	F10

All dimensions are in millimetres, unless noted. Dimensions are approximate. Specifications are subject to change without notice.

Dixon

ph 1300 134 651
 customerservice@dixonvalve.com.au
 dixonvalve.com.au