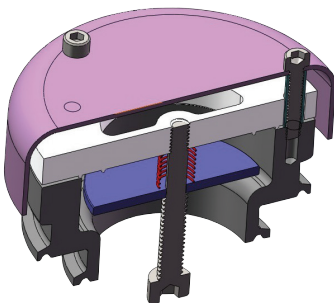
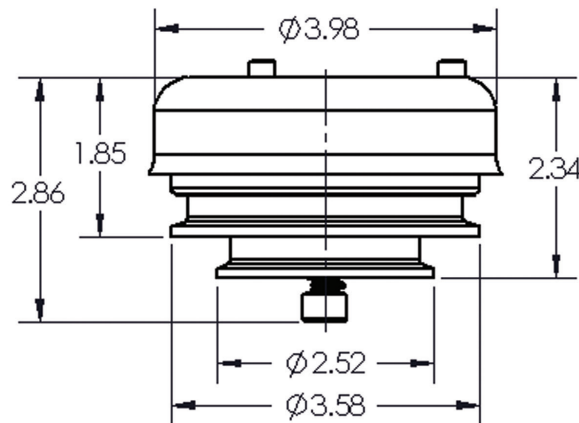


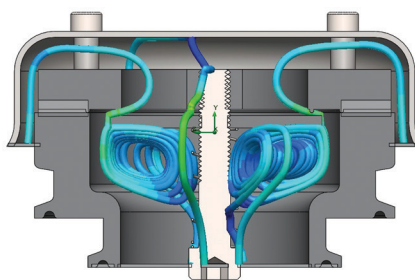
## Air & Vacuum Relief Tank Vent Valve

Features:	<ul style="list-style-type: none"> <li>The valve relieves pressure as the fluid level rises while filling a tank</li> <li>The valve relieves vacuum as the fluid level drops while emptying a tank</li> <li>2" and 3" clamp connections on the same valve</li> <li>Dome helps in preventing external contamination</li> <li>Light weight, robust PVC and 304 stainless steel construction</li> <li>Can use any clamp gasket</li> </ul>
Materials:	<ul style="list-style-type: none"> <li>304 stainless steel</li> <li>PVC</li> </ul>
Flow Rate:	110m³/Hr
Vacuum Break:	0.1 PSI
Pressure Relief:	0.1 PSI

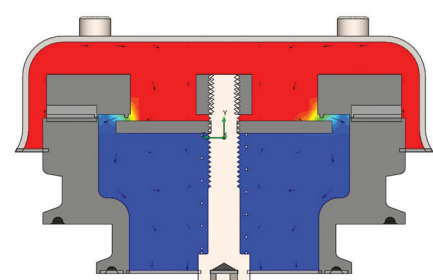
Size (inch)	Part No.
2 and 3	TVPC200-300



Assembly



Vent Flow Pipes



Pressure Analysis